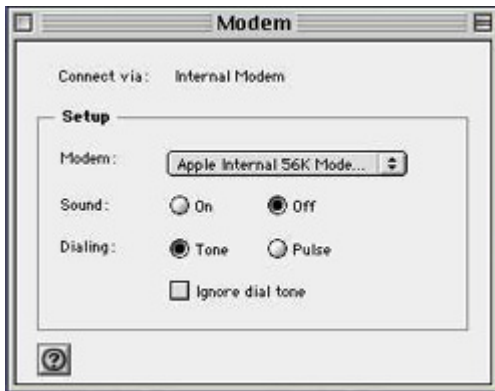


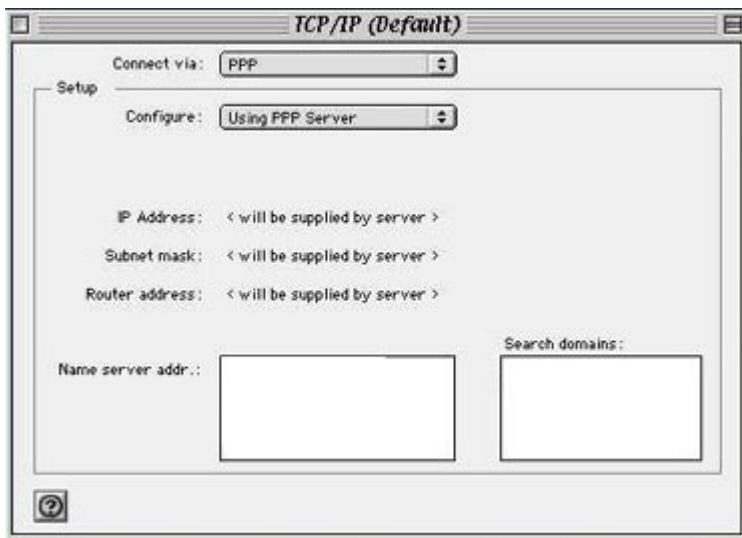
# Telpage

## Internet Setup: Mac OS 8/9

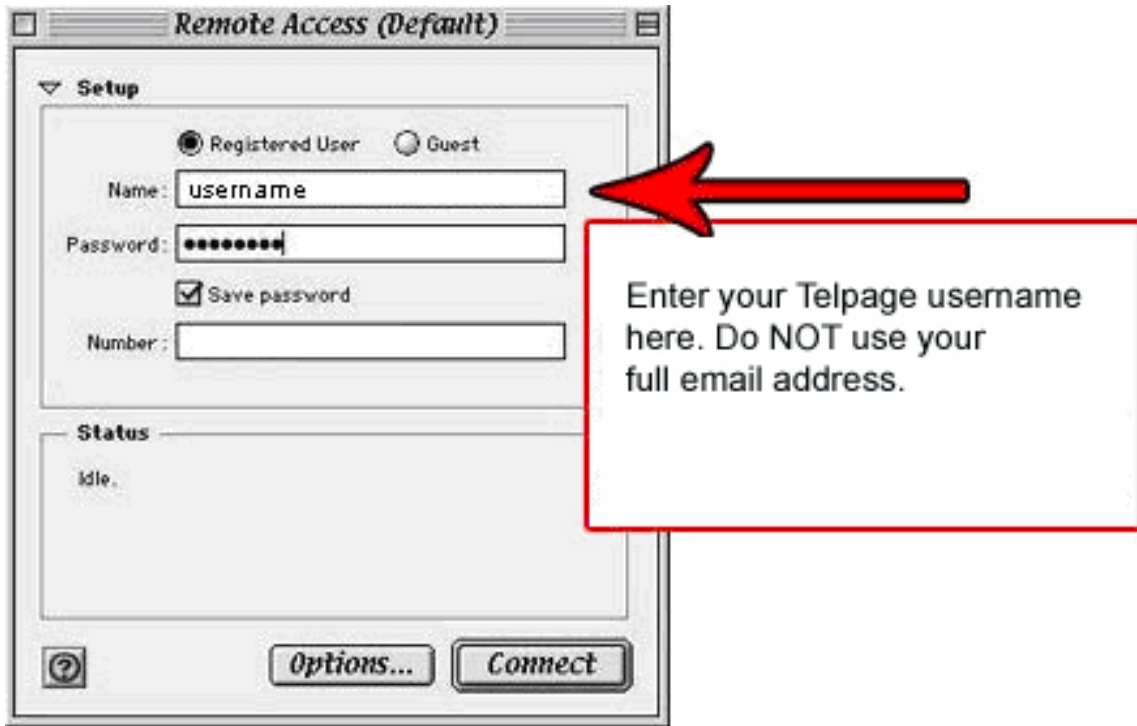
- Open the **Modem** control panel.
- Ensure that you have the correct port selected (**Connect via**).
- Choose the correct modem script from the Modem: pop-up list. If your modem model isn't in the list then try one of the Apple or Hayes Compatible **modem** scripts.



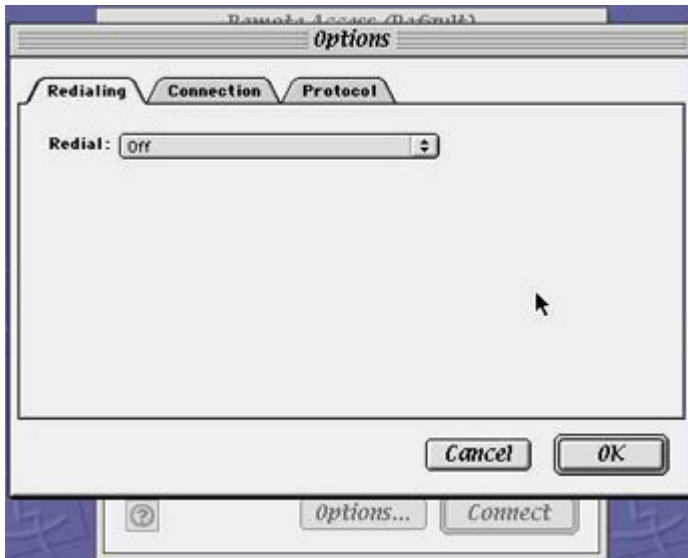
- Open the **TCP/IP** control panel and set everything up as shown.



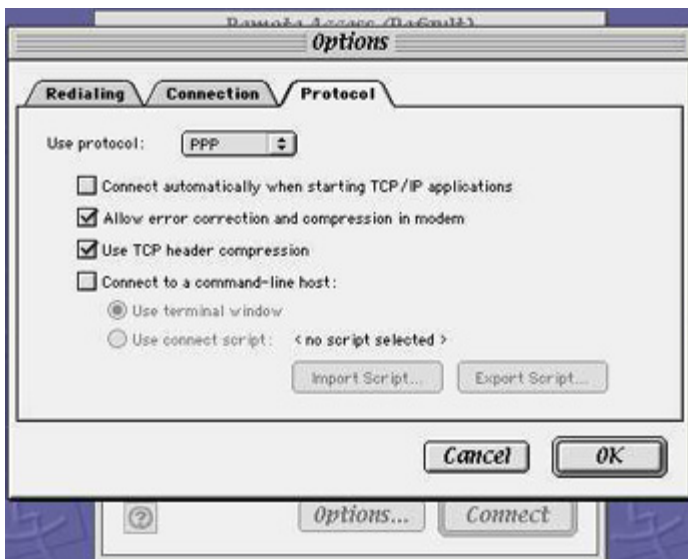
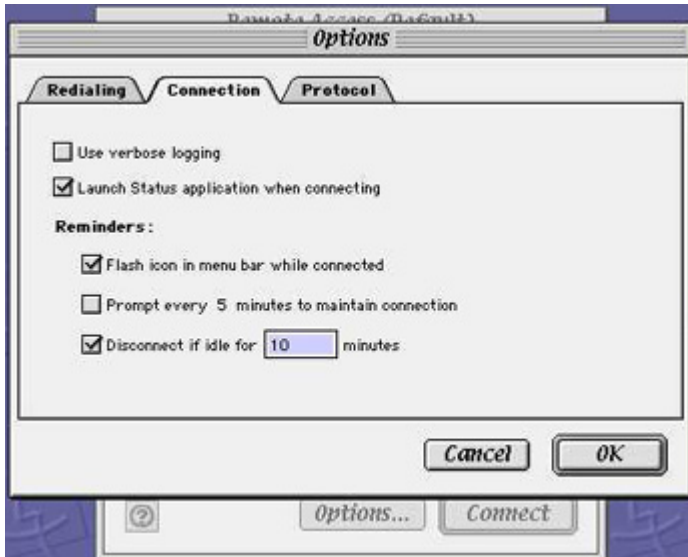
- Open the **Remote Access** control panel (replace nxxx with your dial-up username).



- Click on the **Options...** button and ensure that you have everything set as shown.



- **Disconnect if idle for ...** can be modified. Typically this is set to 10 minutes.



- To initiate a dial-up connection all you now need to do is to click **Connect** in either the **Remote Access** control panel, the **Remote Access** control strip module or **Remote Access Status** application.

➤ **Contacting Telpage for additional support:**

- On The Internet at **www.telpage.net**
- By Email **techsupport@telpage.net**
- By telephone at: **434-634-5100, Emporia Area; 434-447-4700, South Hill Area; 252-535-2400, Roanoke Rapids Area**