

Configuring A Dialup Networking Connection for Your Telpage Internet Connection:

Part 1:

1. On your desktop, look in the upper left hand corner for an icon labeled **My Computer**.
2. Double click the Icon to open it. You will see a screen similar to Figure 1.
3. Your screen may have more or fewer icons than Figure 1 - look for one labeled **Dial-Up Networking**.

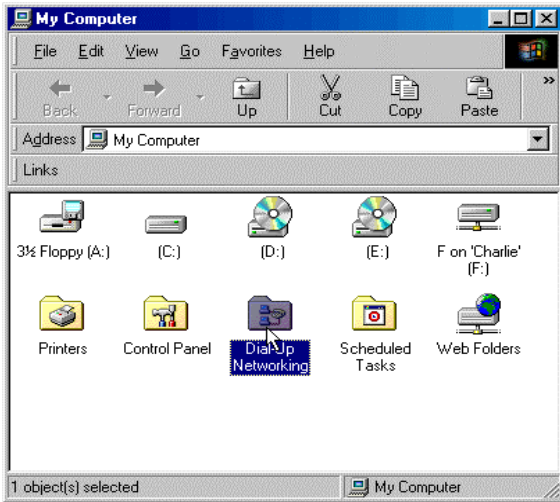


Figure 1

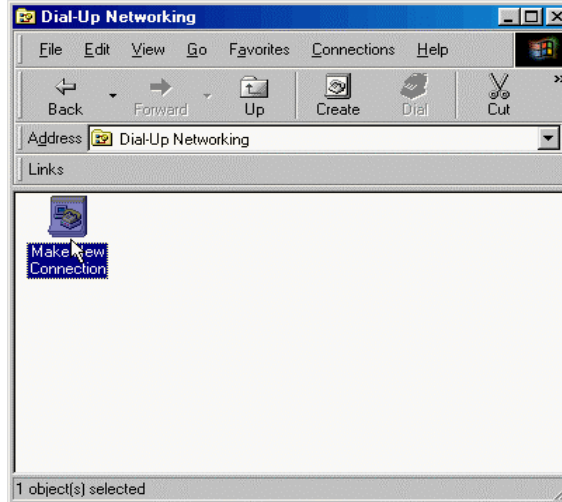


Figure 2

4. Double click the Icon labeled **Dial Up Networking**; you should see a screen similar to Figure 2.
5. Double Click the **Make New Connection** Icon and you will see the screen illustrated in Figure 3.

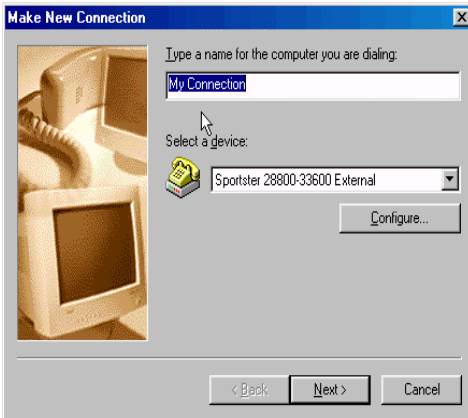


Figure 3

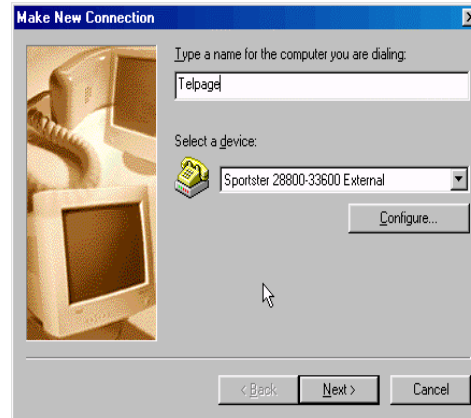


Figure 4

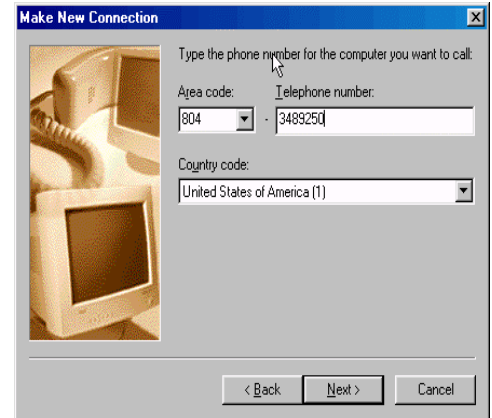


Figure 5

6. The first line in Figure 3 begins '**Type a name ...**' and contains My Connection, replace this with Telpage as in figure 4
7. The second item, 'Select a Device', will be correct, you shouldn't have to change anything. Click Next.
8. The new screen you see will look like Figure 5. Enter the **Telpage Dial Up Access Number** for your area. Figure 5 has the access number entered for the Emporia local calling area. Enter the area code and phone that is appropriate for you local area here. Note that there are separate boxes for '**Area code**' and '**Phone Number**'. Click Next after you have entered the phone number.

- The final screen in this stage of the process will say 'You have successfully created a New Dial up Networking connection called: Telpage'. Click Finish on this screen and go to Part 2.

Configuring A Dialup Networking Connection for Your Telpage Internet Connection:

Part 2:

- You should now be looking at a screen similar to Figure 6. If not, then find and double click the My Computer Icon on your Desktop, this will open My Computer like we did back in Figure 1, then find and double click the **Dialup Networking** Icon.
- Now Right Click on the Telpage Icon as you shown in Figure 7 and Select 'Properties' from the list. If you don't see the list and get the Connect To Box instead, no problem, just click 'Cancel' and try again. The Left mouse button will open the Connect To Box, the Right mouse button will drop down the list we need to work with here.
- Left Click on **Properties** to open the properties dialog box as shown in Figure 8.

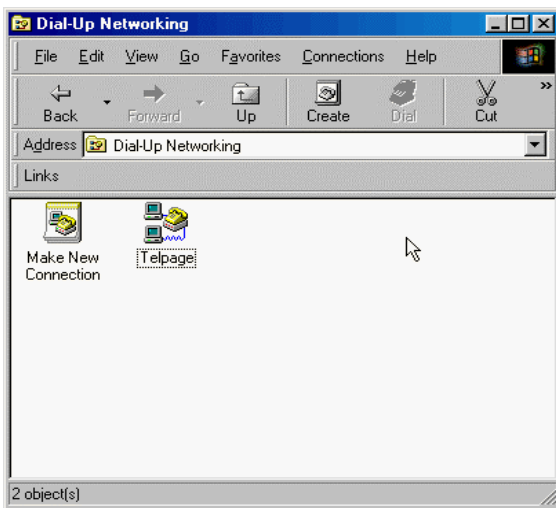


Figure 6

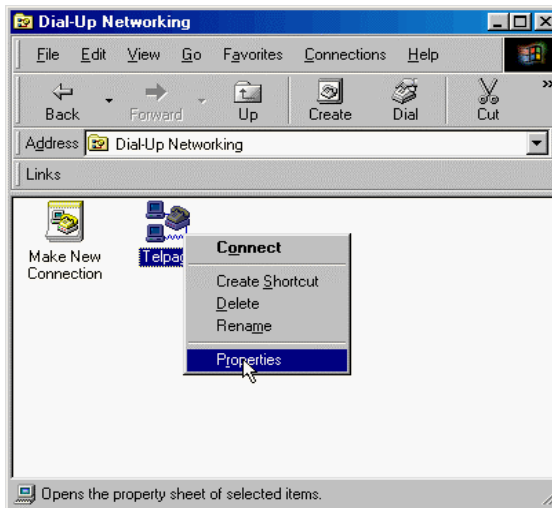


Figure 7

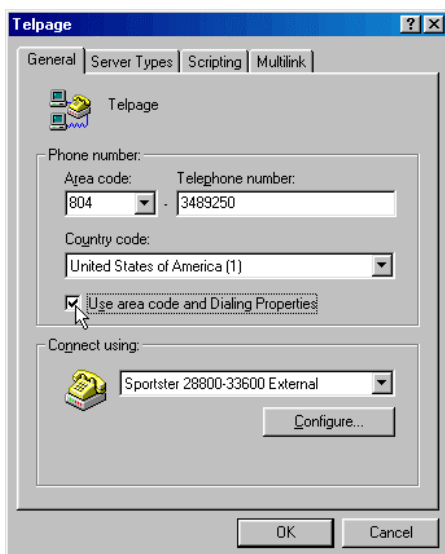


Figure 8

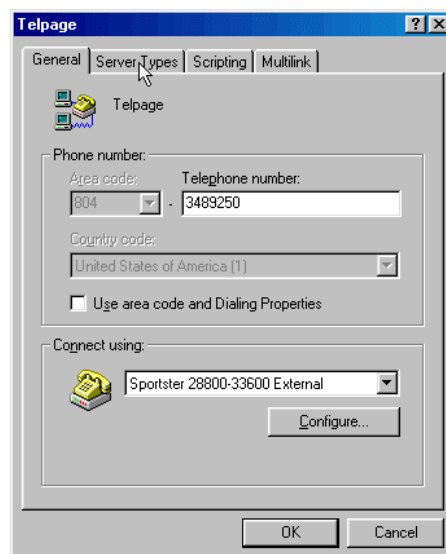


Figure 9

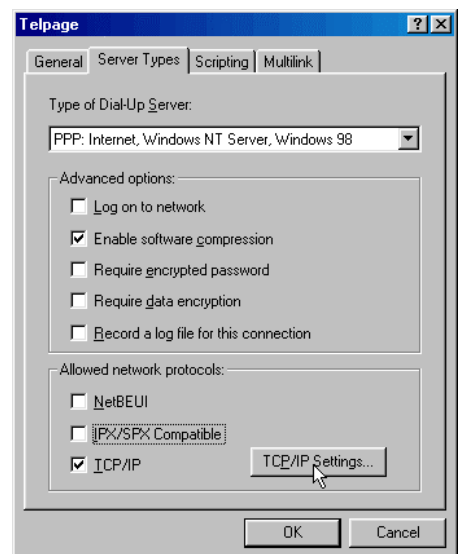


Figure 10

4. Click on the check mark beside Use area code and Dialing Properties to remove it. Your connection properties box should look like the one in Figure 9.

Next click the tab labeled **Server Types**. Your properties should look like the ones in Figure 10. If there are extra boxes checked, just click on the check marks to remove them. Click the button that is labeled **TCP/IP Settings** and continue to Part 3.

Configuring A Dialup Networking Connection for Your Telpage Internet Connection:

Part 3:

1. You should now see a screen as illustrated by Figure 10. Leave everything just as it appears here, you shouldn't have to change anything here. If your TCP/IP settings are different, simply click on **Server assigned IP address to select it**, and **Server assigned name server addresses** to select this option as well. Check the two boxes at the bottom. Now your **TCP/IP Settings** should look just as they do in the diagram. Click the OK button to close this box, and click OK again to finish this portion of setup.
2. Hopefully you now are again looking at the Dial Up Networking dialog box as in Figure 11. Right Click on the Telpage Icon and select Create Shortcut from the list. Left click on Create Shortcut and next you will see the box illustrated by figure 12. Click Yes and close all the boxes you have open.

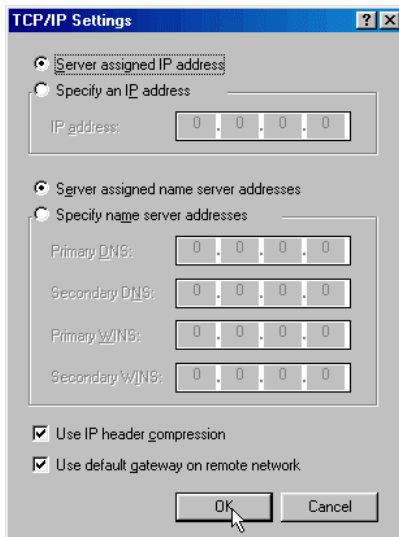


Figure 60

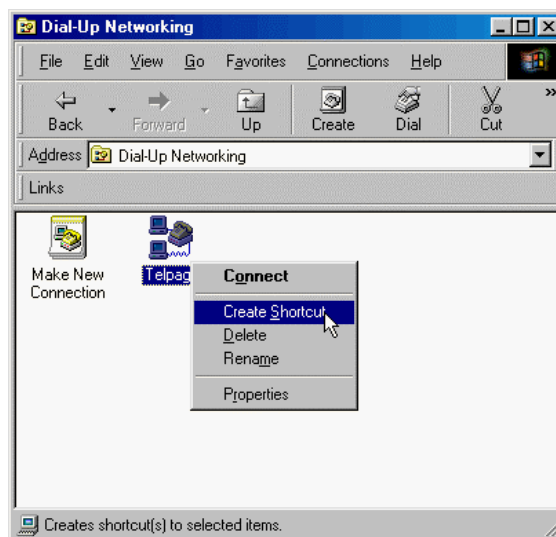


Figure 11

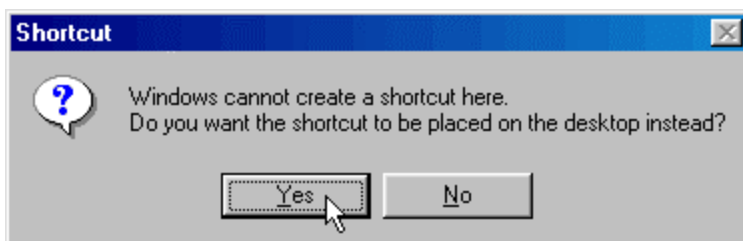


Figure 12



Figure 13

3. You should now have an Icon similar to Figure 13 on your desktop named Shortcut To Telpage. Your Dialup Networking Connection is now complete and ready to use. Double Click the Shortcut to Telpage to try your connection.

- When you double click the Shortcut to Telpage for the first time you will have to enter your user name and password, after you make a good connection to our server Windows will save the user name and password information. See the example in figure 14

Configuring A Dialup Networking Connection for Your Telpage Internet Connection:

Part 3 continued:

- Type in your **Username** and **Password** exactly as they appear on your **Telpage Internet Fact Sheet**. Use all lower case letters check spelling carefully, and be sure not to enter any spaces. Our computer 'sees' a space as an unknown letter, so be careful not to hit the spacebar before or after you type in your username and password.

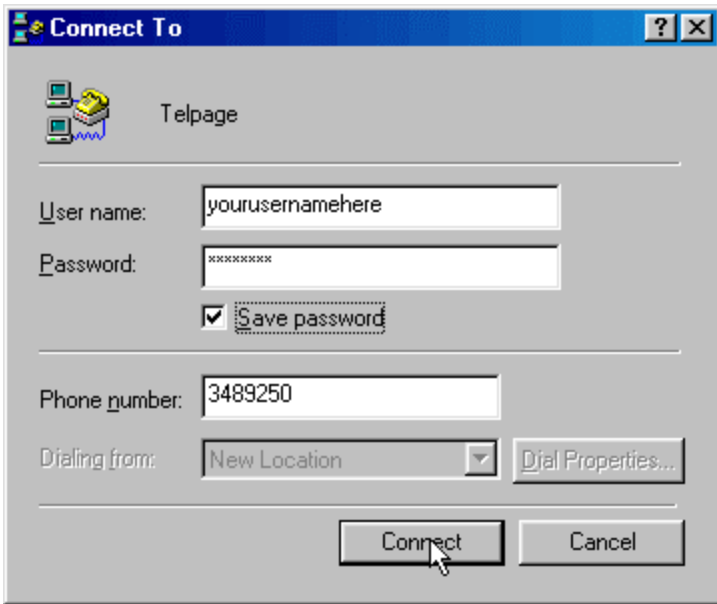


Figure 74



Figure 15



Figure 16

- After entering you user name and password, click the line that says **Save password** to make sure it has a checkmark in the box.
- Verify that the **Phone number** is correct.
- Click the **Connect** button to make your connection. You can watch as the **Dial Up Networking** Connection goes through several steps in the connection process, dialing, verifying username and password, logging on to network. **Note:** This step in the process connects you to our server only and does not automatically start any additional programs.
- If you get an error message, such as 'No dial tone', 'The line is busy', 'The computer you dialing is not answering' or similar, first close any windows you have open, then shut down and restart your computer. Try the connection again and if you still get errors please call **Technical Support**.
- If the Connect to Screen disappears, you don't have an error message, and nothing seems to have happened, then it worked just as it should. Simply open your Browser to explore the Internet.

Quick Definition of Browser: Your Browser is the software you use to view web pages like www.telpage.net. Most people will use Internet Explorer for browsing and some people prefer Netscape Navigator (the latest full package is called Netscape Communicator). Many new computers come with both browsers installed. I personally recommend that you stick to Internet Explorer. Figure 15 displays the desktop Icons or shortcuts for Internet Explorer and Netscape Navigator.